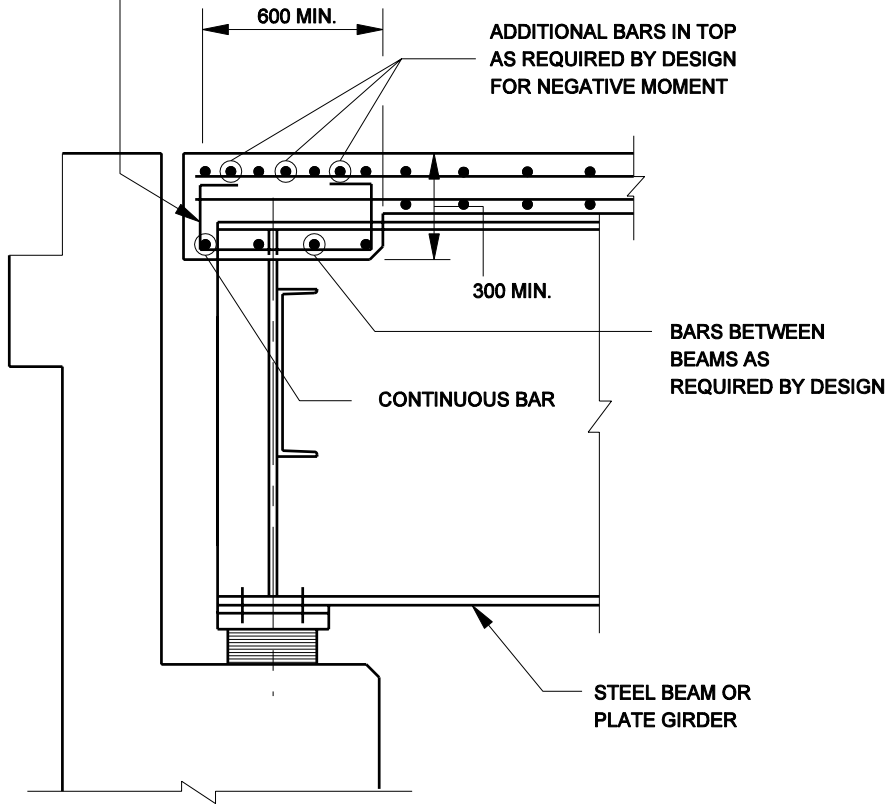


#13 @ 300 MAX. SPA.
BETWEEN BEAMS

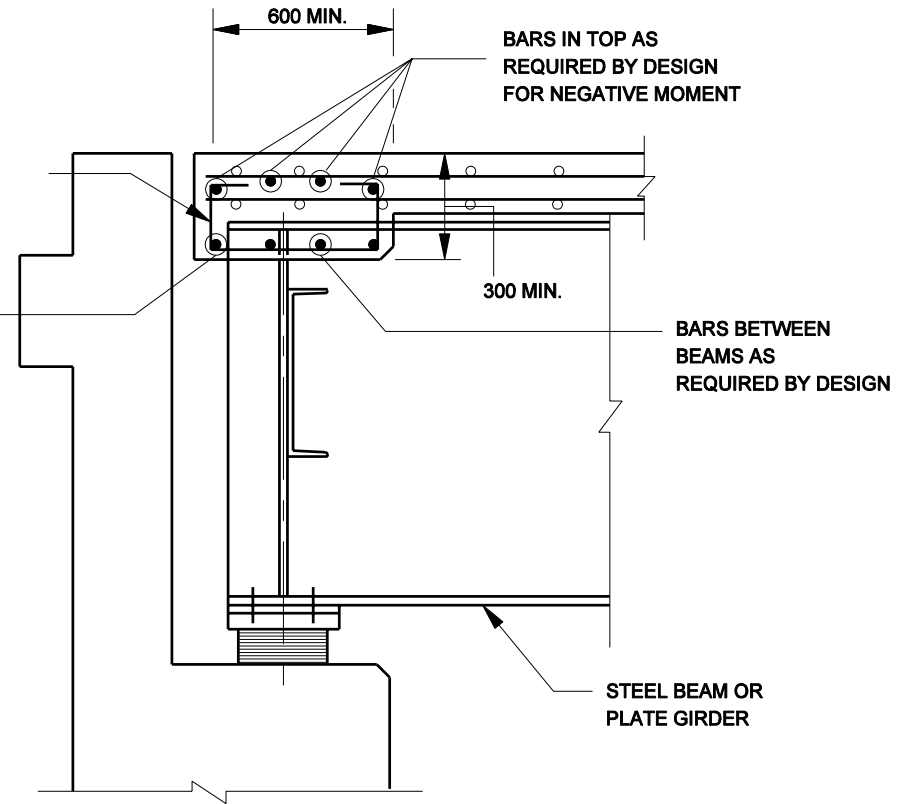
NOTE: ALL REINFORCING STEEL
SHALL BE EPOXY COATED.



SKEW 25° OR LESS

#13 @ 300 MAX. SPA.
BETWEEN BEAMS

CONTINUOUS
BAR



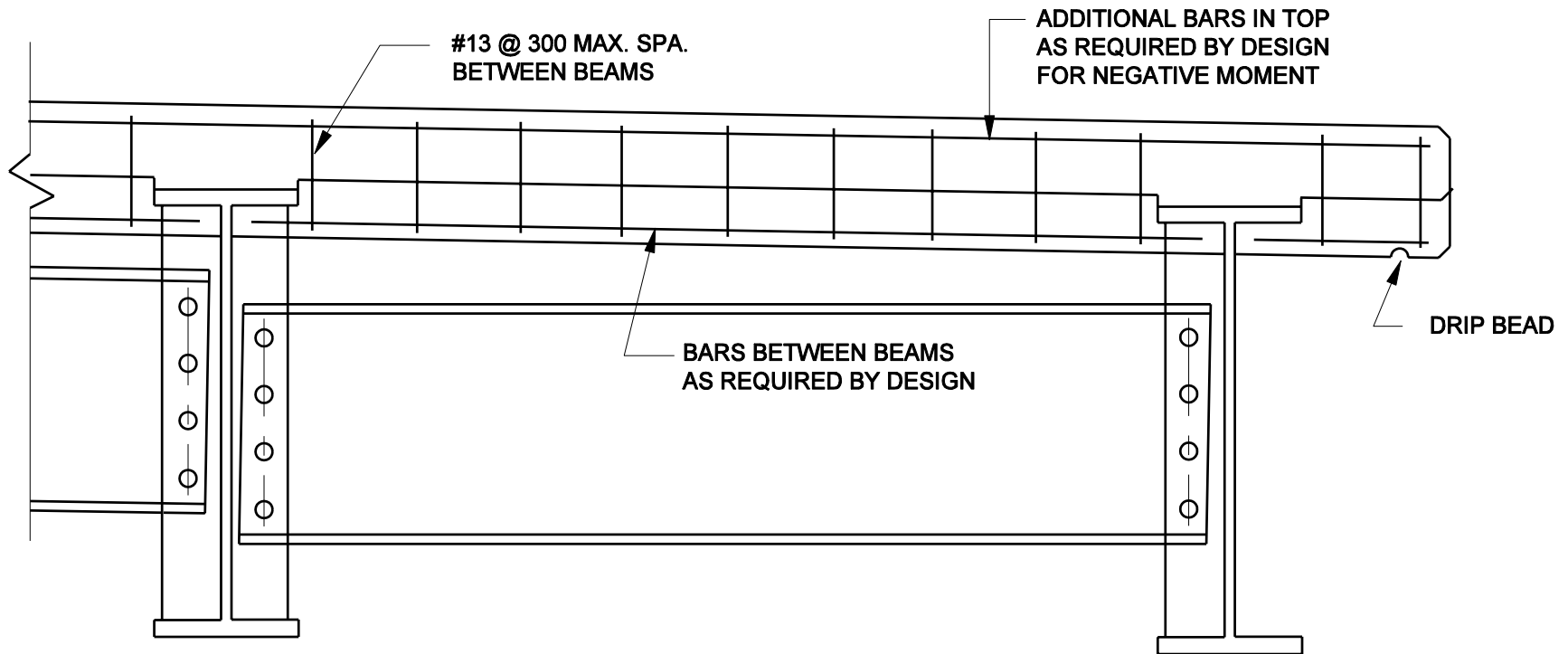
SKEW OVER 25°

SUGGESTED ALTERNATE TRANSVERSE EDGE BEAM DETAILS
(For Steel Plate Girders)

Figure 61-5K

NOTE: ALL REINFORCING STEEL
SHALL BE EPOXY COATED.

NOTE: THE EDGE BEAM SHALL EXTEND
FROM COPING TO COPING.



SUGGESTED ALTERNATE TRANSVERSE EDGE BEAM DETAILS
(For Steel Plate Girders)

Figure 61-5K
(Continued)